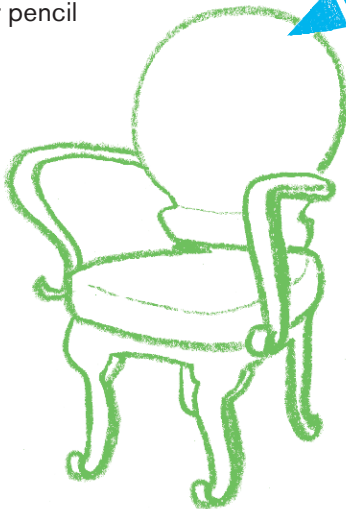
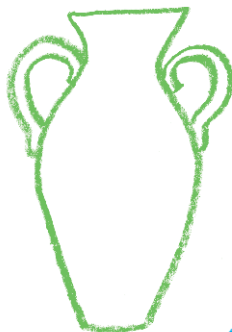


Matisse's Collection of Objects

Henri Matisse collected objects, fabrics, furniture and art from around the world. He bought some and some were gifts. He called these objects his friends and used them in different ways in his artworks throughout his long career.

Draw

Look at these objects below.
Use your imagination and your pencil to make them come alive.



Find

Find Matisse's coffee pot in as many different artworks as you can! Which one is your favourite?



Masks and Portraits



Find *Marguerite*, 1906–7

Matisse painted this portrait of his daughter Marguerite when she was 11 or 12 years old. He uses very few lines to show her eyes, nose and mouth. Her face almost looks like a mask.

Draw

Try to draw a portrait of Marguerite in under ten marks. Simplify what you see!



In your sketchbook:

Matisse said he found it easier to do portraits of people he knew well. Draw a portrait of someone you know well.

Patterns from Around the World



Find *Reclining Odalisque*, 1926
and *Odalisque on a Turkish Chair*, 1928

Matisse collected fabrics with lots of different patterns and colours from different parts of the world. He loved to use different designs in the same painting.

Look for the patterns in these paintings.

Draw

Fill in the last box with another pattern you have seen in one of Matisse's paintings.



In your sketchbook

Try creating a bigger pattern grid using patterns, inspired by things you see in your daily life. You might see a pattern in something you see on your way to school!

The Cut-outs



Find *The Panel With Mask*, 1947–8
and *Mimosa*, 1949–51

Matisse 'drew' with scissors!

First he painted paper with different colours.

Then he cut out the shapes with scissors.

Finally he pinned the shapes to a background,
making changes until he liked the arrangement
of the shapes.

Look at Matisse's cut-outs. Write down
what the shapes look like to you...

Manmade

Buildings

Creatures

Fruit

Plants

Nightmares



In your sketchbook:

Draw your favourite shape from the exhibition.

At home, use scissors to create forms from
coloured paper and paste them into your