

Make and connect - March 14th

A visual guide

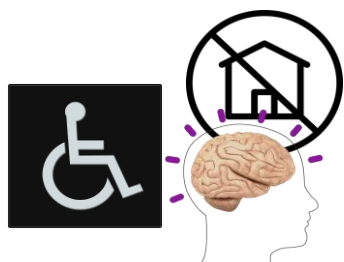
This guide uses pictures and short sentences to explain important information about the Make and Connect workshop.



On **Friday March 14th** the Royal Academy will deliver a Make and Connect workshop.



Make and connect workshops are for adults who face barriers to accessing the arts.



This could be because of disability, health or other social factors.



Make and Connect happens once a month.

1



Carers, friends and support staff are always welcome.

Make and Connect – March 14th

A visual guide

What are the timings of Make and Connect?



The workshop will start at 11am



It will finish at 1.30pm



The workshop is drop-in. This means you can arrive at any time and stay for as long as feels comfortable.

How do I book?



Make and Connect is free to take part.

You do not need to book to take part in this workshop.

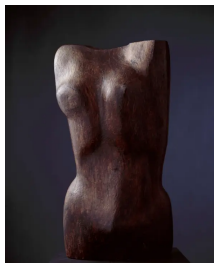


We ask that you complete this short form to let us know your access requirements.

Make and Connect – March 14th

A visual guide

What will I be doing during my workshop?



John Skeaping RA
Female Torso, ca. 1960
Wood. 648 mm x 343 mm. © Royal Academy of Arts. © Photo: Royal Academy of Arts, London.
Photographer: Paul Highnam

This workshop will be inspired by artworks in our collection gallery display *Observation to Abstraction*.



Tracey Emin RA
Trying to Find You 1, 2007
Acrylic on canvas. 210 x 298 x 26 mm. Photo: RA/Prudence Cuming Associates Limited © The Artist

We will be explore different ways to draw the figure using objects, paint and charcoal.

Who will be there on the day?



The workshop will be led by artist Sam Ayres.



Staff supporting on the day will be Jemima (Communities Programmer) and 3 workshop assistants.

Make and Connect – March 14th

A visual guide

Where will my workshop take place?



The workshop will take place in-person at the Royal Academy of Arts.



It will be held in a room called the Clore Learning Centre which has big bright windows.



The Clore Learning Centre is on the ground floor of the Burlington Gardens building.

Make and Connect
Adult community workshop

Draw

Clore
Learning
Centre

11 am – 1.30 pm

Head to the front desk at Burlington
Gardens for directions.



There will be signs throughout the building to guide you.

If you cannot find the space, ask a member of the front desk team to help you.

Make and Connect – March 14th

A visual guide

Is there any other information I need to know?



Make and Connect workshops are very popular and spaces are limited.

Groups must be no larger than **6-8 people**, so we can make sure everyone has the chance to take part on the day.



A breakout space will be available. The space includes sensory aids such as ear defenders and scented bags.



Tea, coffee and biscuits will be provided.



You are welcome to bring your own drinks and snacks from home if you would like.

Make and Connect – February 14th

A visual guide

Building information to help you plan your visit:

Visual story

This visual story will help prepare you for your visit to the Royal Academy of Arts.



View a **visual story** about our building and facilities [here](#).

Sensory map

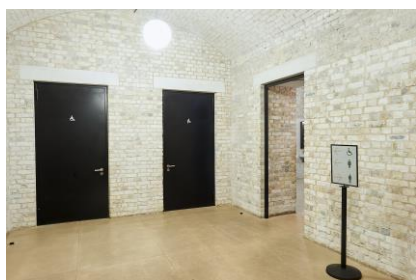


Download a **sensory map** of our building [here](#).



Disabled Parking

To book, email tickets@royalacademy.org.uk or call 020 7300 8090 at least two weeks before your visit.



Accessible toilets

All on the ground floor and have paper towels instead of hand dryers. We do not have a changing places toilet on site.

To find out more about access at the RA, head to our [visitor information page](#).

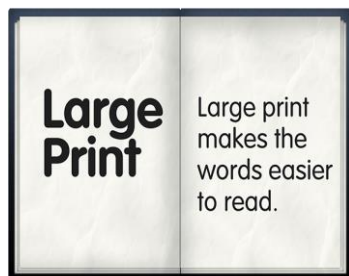
Make and Connect – March 14th

A visual guide

Get in touch with us at
communities@royalacademy.org.uk to:



Ask us any questions before the workshop.



Ask for this information in a different format.



We look forward to seeing you soon!