

InPractice

A visual guide

This guide uses pictures and short sentences to explain important information about the Make and Connect workshops.

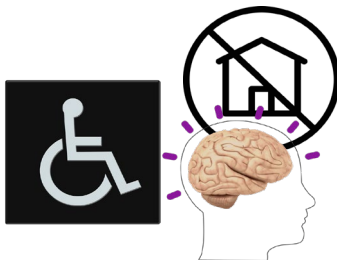


On **Friday February 21st**, the Royal Academy of Arts is running an InPractice evening.

What is InPractice?



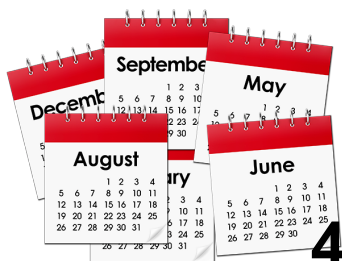
InPractice is an artist sharing event where creatives can present their practice to an audience.



Presenting slots are for artists who face barriers due to disability, health or other social factors.



Anyone is welcome to be part of the audience. This includes carers, friends, support staff and those interested in artist sharing events.



InPractice happens 4 times per year.

InPractice

A visual guide

What are the timings of InPractice?



The event will start at 6pm.



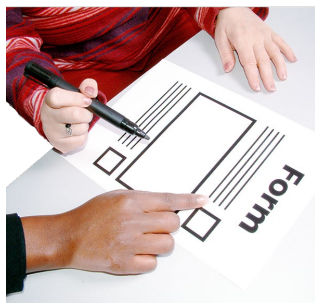
The event will finish at 8.30pm.

How do I attend as an audience member?



InPractice is free to attend.

You do not need to book to take part.



We ask that you complete **this short form** to let us know your access needs.

How do I present as an artist?



Please email
communities@royalacademy.org.uk to
express an interest in presenting.

InPractice

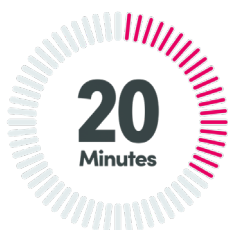
A visual guide

What is the structure of the evening?



4

We will hear from the first 4 artist presenters.



There will be a short interval break of 20 minutes.



4

We will hear from the final 4 artist presenters.



Each presentation will last approx. 10minutes.



There will be time to ask artists questions either in the breaks or after each presentation.



You are welcome to take movement breaks throughout the evening.

InPractice

A visual guide

Where will the event take place?



The event will take place in-person at the Royal Academy of Arts.



The event will be held in a space called the Clore Learning Centre



The Clore is on the ground floor of the Burlington Gardens RA building.

There will be signs throughout the building to guide you.



If you cannot find the space, ask a member of the front desk team to help you.

InPractice

A visual guide

Is there any other information I need to know?



If you would like to bring a large group to InPractice, please email **communities@royalacademy.org.uk** in advance.



A breakout space will be available. The space includes sensory aids such as ear defenders and scented bags.



Tea, coffee and light snacks will be provided.



You are welcome to bring your own drinks and snacks from home if you would like.

InPractice

A visual guide

Building information to help you plan your visit:

Visual story

This visual story will help prepare you for your visit to the Royal Academy of Arts.



View a **visual story** about our building and facilities [here](#).

Sensory map



Download a **sensory map** of our building [here](#).



Disabled Parking

To book, email tickets@royalacademy.org.uk or call 020 7300 8090 at least two weeks before your visit.



Accessible toilets

All on the ground floor and have paper towels instead of hand dryers. We do not have a changing places toilet on site.

To find out more about access at the RA, head to our [visitor information page](#).

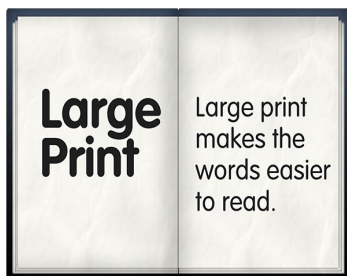
InPractice

A visual guide

**Get in touch with us at
communities@royalacademy.org.uk to:**



Ask us any questions before the event.



Ask for this information in a different format.



We look forward to seeing you soon!