



Large  
Print

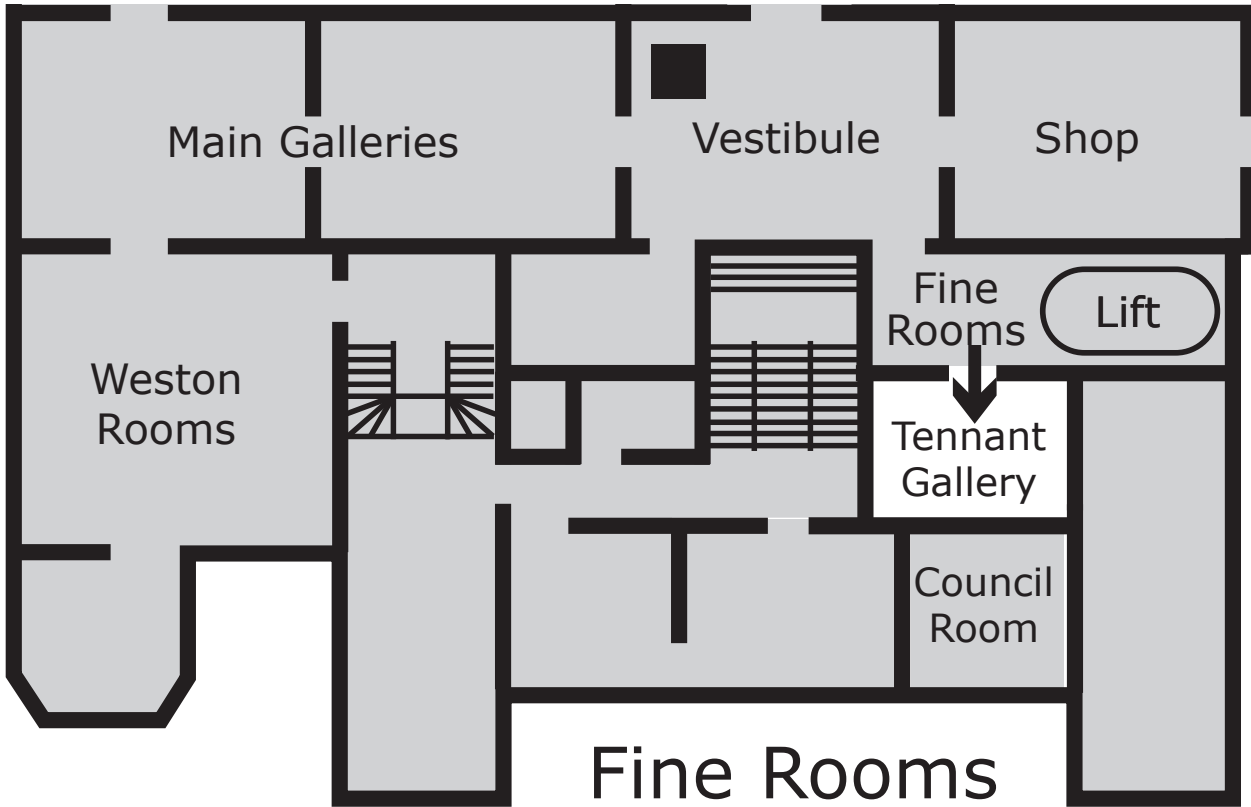
**Anthony**

**Whishaw RA**

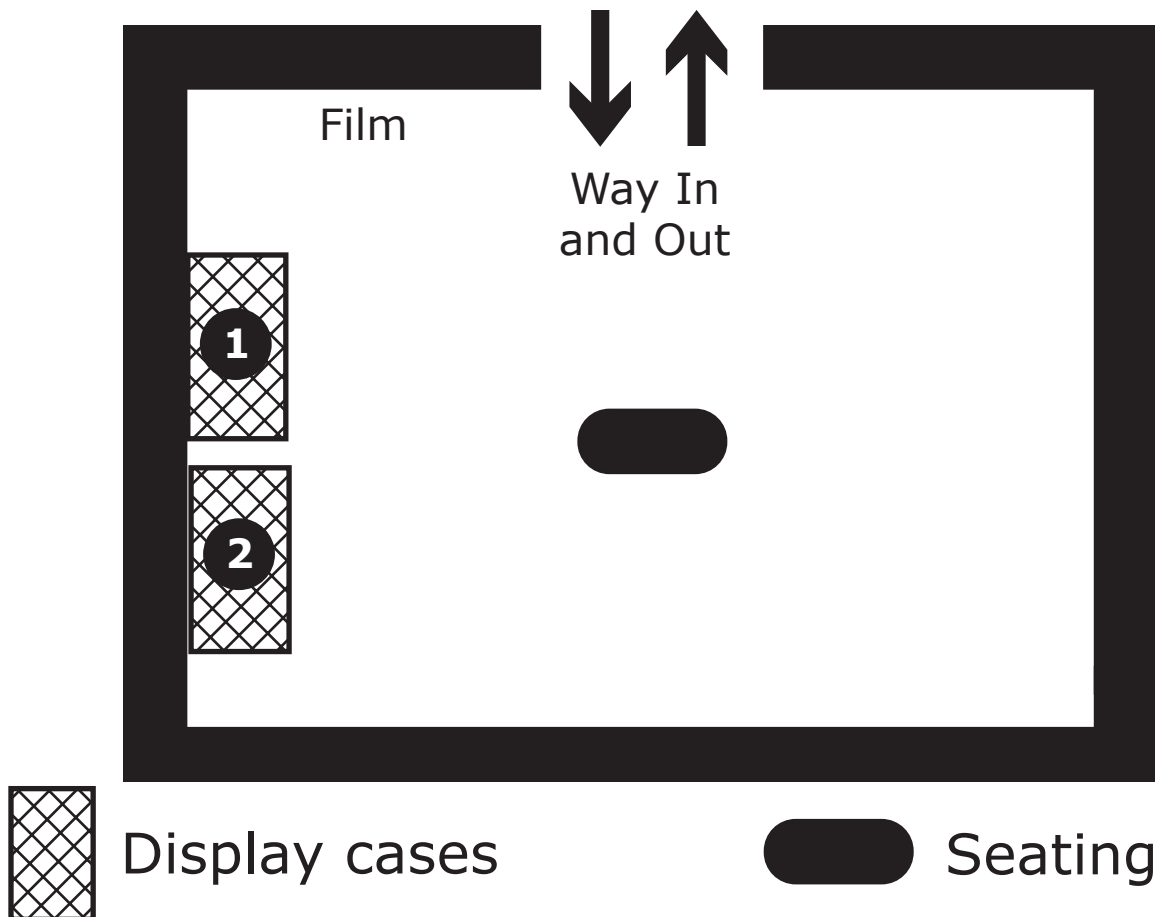
**With Spain in Mind**

Tennant Gallery

**Do not remove from gallery**



You are in The Tennant Gallery



# **Anthony Whishaw RA**

14 February – 5 July 2020

## **Contents**

### **Page 4**

Introduction to the exhibition

### **Page 7**

List of works

### **Page 15**

Display cases

# **Anthony Whishaw RA: With Spain in Mind**

This display of paintings and drawings by Anthony Whishaw (born 1930) explores the powerful influence Spain has had on his work since his first visit in 1951 through to the present day.

For nearly seventy years both consciously and unconsciously Whishaw's paintings trace the impact and memory of Spanish culture and landscape as well as his fascination with artists such as Velázquez, Goya and Picasso.

Whishaw's dramatic 'Bullfight with Falling Picador' (1951) is an early depiction of this savage ritual as well as a response to Picasso's 'Guernica' (1937). 'We Are Still Looking at You Looking at Us' carries echoes of Goya's work, with its black background and distorted heads emerging from the shadows.

Perhaps the Spanish painting which has had the greatest impact on Whishaw is Velázquez's masterpiece, 'Las Meninas' (1656) as elements from this picture permeate many of Whishaw's paintings from the early 1980s in which he explores ideas of reflection and distortion

Memories of Whishaw's journeys through Spain on his Lambretta scooter across high mountains and hill-top villages infuse many of his abstracted landscapes such as 'Blue Road Northwards II' (1967).

'Matadero Municipal' (1983-1996) uses deep reds and orange to conjure the interior of a disused slaughterhouse with motifs of a bull's skull, brand markings and letters which spell out the title of this major work.

Unless indicated, all works are on loan from Anthony Whishaw and family.

**Further enquiries about artworks should be sent to [studio@anthonywhishaw.com](mailto:studio@anthonywhishaw.com)**

# **Free taster talks**

Monday 16 March 2020

Monday 23 March 2020

2–2.15 pm

Meet here

# **Free curator's talks**

Friday 24 April 2020

Tuesday 12 May 2020

Tuesday 16 June 2020

2–2.30 pm

Meet here

# List of works

**1.**

## **Still Night Sea with Gibraltar In Mind**

1975-2011

Acrylic on canvas

**2.**

## **Horse's Head**

1954-1955

Oil on canvas

**3.**

## **Bullfight with Falling Picador**

1951-1952

Oil on canvas

RA Collection

**4.**

## **At the Chepstow Races**

2008-2016

Acrylic on canvas

**5.**

## **We Are Still Looking at You Looking at Us**

2014-2017

Acrylic and collage on canvas

Private collection

**6.**

## **Pueblecito**

2010-2015

Acrylic and collage on board



**7.**

## **Reverie**

2004-2008

Acrylic and collage on board

**8.**

## **Reverie IV**

2011-2013

Acrylic and collage on board

**9.**

## **Matadero Municipal**

1983-1996

Acrylic and collage on canvas

**10.**

## **Margarita and Maid of Honour**

1984-1985

Acrylic and collage on board

**11.**

## **Interior Variations II**

1994-2014

Acrylic and collage on board

**12.**

## **Maria Barbola and Dog**

1984-1986

Acrylic and collage on board

**13.**

## **Pyrenean Landscape**

1986-1990

Acrylic and collage on board

**14.**

## **Chiclana de la Frontera**

1963

Oil on board

**15.**

## **Blue Road Northwards II**

1967

Oil on board

**16.**

## **Blue Interior with Window**

1991-1992

Acrylic and collage on canvas

**17.**

## **Rooftops**

2004-2008

Acrylic on canvas

**18.**

## **View Through**

2012-2018

Acrylic and collage on canvas

**19.**

**Over the Roof Tops  
Towards the Sea**

2001-2016

Acrylic and collage on board

**20.**

**Pueblo**

1964

Oil on board

**21.**

**Interior with Figure**

2004-2008

Acrylic collage on board

RA Collection

**23.**

**Caprice, Interior with Reflections**

1985-1987

Acrylic and collage on canvas

**25.**

**Pawn Observed Knight**

1984-1995

Acrylic and collage on board

**24.**

**Spanish Interior with Mirror and Painting**

1993-1995

Acrylic and collage on board

**26.**

# **Artist Model and Painting**

1986-1995

Acrylic and collage on canvas

**[film]**

# **Extracts from BBC film 'Monitor 50 – Private View'**

1960

Directed by John Schlesinger, narrated by Hugh Weldon

Edited duration 4 minutes 30 seconds

BBC © copyright content reproduced courtesy of the  
British Broadcasting Corporation. All rights reserved.

# Display case 1

## **Twist**

1958

Pen and Ink on paper

## **Dance**

1963/1984

Acrylic, pen and ink on card

## **Dancers**

1959

Pen and ink

## **Compositional Diagrams**

1959

Pen and ink

# **Man on Beach**

1959

Pen and ink and wash

# **Seated Men**

1962

Pen and ink and wash

# **Playing Squash 3**

1957

Pen and Ink

# **Man Washing his Feet**

1956

Pen and ink and wash

# **Seated Couple and Child**

2018-2019

Mixed media on paper



# **Couple with Child watching TV**

2018-2019

Mixed media on paper

# **Mother and Child**

1963

Pen and ink and wash

# Display case 2

## **Studies of seated man and study of man mixing cement**

1960

Pen and ink and wash

## **Campall**

1961

Pen and ink and wash

## **Two Donkeys**

1962

Pen and ink and wash

# **Anthony Whishaw and Jean Gibson on their Lambretta setting off to Spain**

c. 1957

Photograph

## **Jean Gibson**

c. 1957

Photograph

# **Anthony Whishaw mucking about in Spain**

1950s

Photograph

## **Dead Bull**

1952

Pencil, pen, watercolour and chalk

# **Bullfight**

1958

Black chalk and charcoal

# **Drawing for plaster sculpture of wounded bull**

1954

Pen, pencil and watercolour

# Your feedback, please

As we are committed to access for all, we would like your feedback on our large-print provision. Feedback forms are available from the Information Desk on the ground floor.

We also offer one-to-one audio descriptive tours of the exhibitions with trained volunteer audio describers.

Wheelchair users can also benefit from our volunteers, who can assist with taking you around the galleries so you can enjoy our exhibitions at your leisure. With prior notice we can arrange these at a time that fits with your schedule. Please contact us for more information.

E: [access@royalacademy.org.uk](mailto:access@royalacademy.org.uk)

T: 020 7300 5732



**InTouch**  **at the RA**

Design & typography by WfS Create: [mail@wfscreate.com](mailto:mail@wfscreate.com)

© Copyright Royal Academy of Arts, London, 2020.